

dedicated suppliers of  
**quality products and services**  
at competitive prices



# Jainsons

— INTELLIGENT GLOBAL SOLUTIONS —

## About us

Jainsons India Pvt. Ltd. is an authorized distributor of industrial electrical components with high level of quality serving customers.

We are well established with a highly professional sales, marketing, warehousing and distribution operation. Consequently we are able to deal with all the major customers in Wiring Harness Industry, Railways, D.M.R.C., OEMs, etc. We are continuously sourcing products, which we feel have the potential to impact on the Indian market. We have all the necessary experience, knowledge and capital to ensure the success.

Our management has many years experience in the fields of importing and distributing. We have an experienced management team led by, Sh. Shanti Lal Jain, who has over 42 years of experience in the industry and we benefit significantly from his expertise. The basic function of the company is to source, market and distribute them in the domestic market. Jainsons India Pvt. Ltd. started out as a small family business in 1980 when the core business of the company at that time was supplying domestic electrical goods to small retail outlets.

### The biggest brands - The widest choice

Associated with few of the leading Indian and international companies of the respective field, Jainsons India Pvt. Ltd. is honoured to be renowned as a notable distributor and exporter in the marketplace. The companies we deal in are Panduit (USA), Gem Telergon (Spain), Hellermann Tyton (Japan), Klauke (Germany), Phoenix (India/Germany) Allied Connectors (India) Ideal Electrical (USA), Partex (Sweden) Fuji Terminal (Japan) and more... Apart from the ethical business, they also help us serve vast clientele by providing exceptional quality products and solutions as per the specific needs of our reputed patronage.

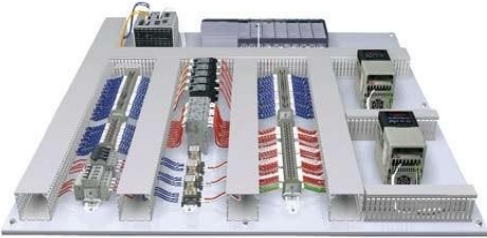
By our sheer hard work and dedication Jainsons India Pvt. Ltd. has now become from a trader to a distribution centre & an able solution provider in all the verticals viz. Aerospace, Power & Energy-Solar & other conventional methods, Oil & Gas, Automobile, Railways, Health-Food processing, Defence, Medical, Garment and more.

### Our range of products covers the following areas:

- Cable & Wiring Accessories
- Cable Glands (PG & Metric Thread)ConnectorsControllers
- Flexible Conduit Pipe & Glands
- Grounding Systems
- Cable Cleat for Electricals Installations
- Identification Systems/Solutions
- Installation Tools & Mounting Materials
- PCB terminal blocks and PCB connectors
- Power supplies and UPS
- Relay modules
- Sensor/actuator cabling
- Safety, Security, Health & Environment Products
- Surge protection and interference filters
- Switches (Rotary / Cam Switch / DC Switch /AC Switch/Changeover)
- Wire Nut/Twister
- Wire Routing, Protection, and Insulation
- Wire Termination
- Wiring Harness and Harness Board Accessories
- Charging Connectors for Electric Vehicle
- Cable ties for Food & Pharma Industries
- EV Relay / High Voltage DC Relay



Layout with Conventional Wiring Duct

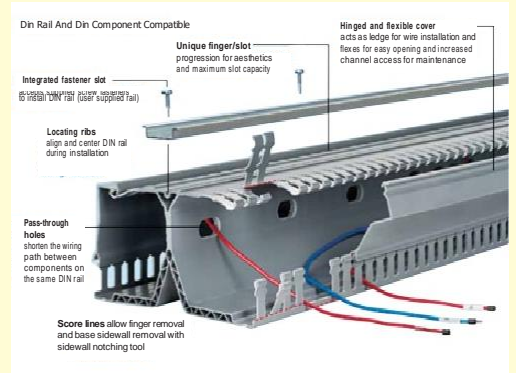


Layout with DIN Rail Wiring Duct



**ParallelMax™** DIN Rail Wiring Duct is an innovative wire management solution that maximizes space utilization within industrial enclosures for flexibility in panel layout and reduced material and installation costs. The unique design raises components from the panel surface for easier access and faster terminations. DIN rail wiring duct is compatible with common DIN rail and DIN mount components<sup>1</sup> to satisfy a wide range of applications.

The Industrial Automation Solution from Panduit meets the most demanding requirements and applications with a broad range of product systems that aid in reducing design and assembly time, creating valuable panel space savings, providing easier installation and maintenance, and improving reliability.



## PANDUIT Cable Ties

**Maximum Design Flexibility**  
Broadest selection of sizes, styles, and materials for use in indoor/outdoor and harsh environment applications.

**Fast and Reliable Installations**  
Designed to meet or exceed industry standards with superior product features such as low thread force and high tensile strength to provide the highest quality and lowest installed cost.

**Improved Productivity**  
Full line of ergonomic cable tie tools install ties quickly and reliably, providing flush tie cut-off for safe installations.

## PANDUIT Cable Accessories

**Design Flexibility**  
An extensive range of mounts, clips, and clamps allow control panel builders to select from adhesive backed, user applied adhesive, screw, rivet or push barb mounting options.

**Conserve Space**  
Low profile mounts, designed to position bundle closer to mounting surface, provide reduced standoff height of cable.

**Speed Installation**  
The comprehensive offering of accessories is engineered to increase productivity and lower installed costs for routing and managing cable.

## PANDUIT® VeriSafe AVT

Models: VS-AVT-C02-L03, VS-AVT-C02-L03A,  
VS-AVT-C02-L03E, VS-AVT-C02-L10,  
VS-AVT-C08-L10, VS-AVT-C08-L10A, VS-AVT-C08-L10E



The VeriSafe Absence of Voltage Tester is a permanently-mounted tester that is used to verify a circuit is de-energized prior to opening an electrical enclosure. Once installed, a push of a button enables personnel who have been trained on the operation of the tester to verify the absence of voltage and see an active indication when the absence of voltage is confirmed. The Indicator Module is designed for a 30 mm notched panel knockout and the Isolation Module can be mounted to DIN rail or surface mounted using screws.

## PANDUIT Labeling Systems



PANDUIT is a global leader in reliable and innovative identification solutions. PANDUIT provides enhanced productivity, reliability and value with leading edge software development, materials and equipment. The comprehensive line includes labeling products, software and printers.

### Ensure Reliability

World-class quality solutions provide high performance, reliable identification that meets and exceeds the requirements of UL, CSA, ISO, NEC and OSHA.

### PANDUIT Featured Products

- **PANTHER® LS8 Hand-held Thermal Transfer Printer**

This versatile printer, with revolutionary label cut-to-length functionality, eliminate label waste and label trimming labor. Print high quality, industrial labels on a wide variety of materials for wire/cable, component, safety and facility identification. The fast-loading label cassettes contain an integrated memory device for autonomic formatting, recall of last legend used, number of labels remaining in the cassette. USB interface equipped for importing data, system upgrades and printing labels from a wireless laptop or desktop computer.



### PANTERM® Terminals, Disconnects, Splices and Ferrules

#### Improve Productivity And Worker Safety

The full range of PANDUIT controlled cycle installation tools are designed for fast terminations to improve productivity. Ergonomic design reduces handle effort to crimp by 50% when compared to plier-type tools, minimizing repetitive motion injuries and fatigue for improved worker safety.

#### Meet Industry Standards And Specifications

Meets the requirements of independent safety testing organizations. Terminals are UL listed and recognized, CSA certified, ABS (American Bureau of Shipping) approved and meet applicable military specifications.

### PAN-LUG™ Power and Grounding Connectors

#### Ensure High Quality Connections At Lowest Installed Cost

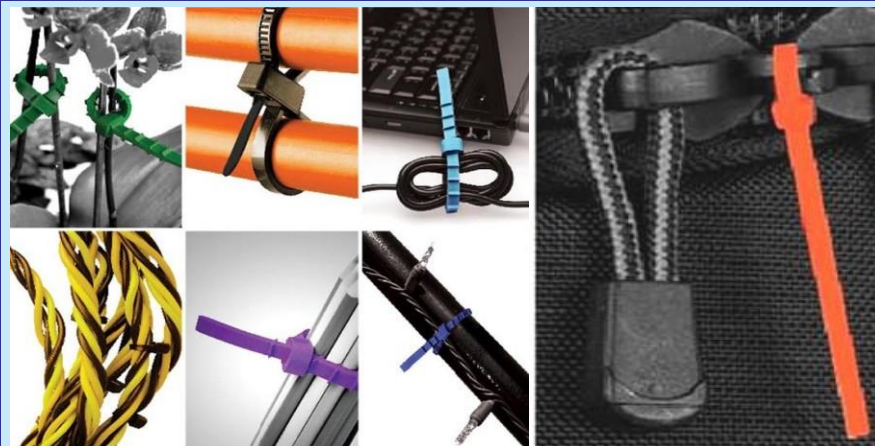
Pan-lug compression connectors are UL and CSA approved with both PANDUIT and specified competitor crimping tools and dies to endure safe and reliable terminations.

#### Save Space And Gain Maximum Design Flexibility

45° and 90° bent tongue lugs and marrow tongue lugs are available as standard parts to maximize the number of connections per linear foot.

#### Minimize Inventory Requirements To Lower Costs

Flex lugs terminate code conductor class G, H, I, K, M and Locomotive; purchase a single connector to accommodate a wide range of conductors



**INFINITE POSSIBILITIES WITH TYCAB**

**StrongHold™ Stainless Steel Cable Ties**

StrongHold offers a comprehensive selection of stainless steel products such as Metal Locking Ties (IMLT) and Custom Length Strapping (IMS) in uncoated and fully coated options to deliver high performance, strength, and reliability against harsh environments. Suitable for the following environments; Solar, Chemical Plants and Refineries, Industrial Construction, Mining, Oil and Gas, MRO, and Shipbuilding.

**StrongHold™ Stainless Steel Straps and Buckles****Stronghold™ Electrical Tape**

StrongHold offers a variety of electrical tape suitable for a wide range of indoor and outdoor applications and temperatures. Whether your application calls for high resistance to sun, water, oil, acids alkalis, and corrosive chemicals, primary insulation for splicing, or phase identification, StrongHold tapes have you covered. Check out our full offering of PVC, Rubber, Mastic, and Friction tapes.

**Check out our full offering of PVC, Rubber, Mastic, and Friction tapes!**

- [PVC](#)
- [Rubber](#)
- [Mastic](#)
- [Friction](#)



- **ST88 Heavy Duty Tape**
- **Heavy Duty Electrical PVC Vinyl Tape Offering**
- **ST35 & ST43 Professional Grade Tape**
- **Professional Grade Electrical PVC Vinyl Tape Offering**
- **ST14 & ST17 General Purpose Tape**
- **ST15 General Purpose Tape**
- **General Purpose Electrical PVC Vinyl Tape Offering**

## Preferred Parts for Network Infrastructure

### Copper Cable



PUP6AV04BU-G PUP6004BU-W PUO6C04BL-U

### Rj45 Patch Cords



UTP28X\*

### Rj45 Jack Module



CJ688TGBU

### NetKey® Jack Modules



### IndustrialNet™ Connectors



MPI588T



IAEBH

### TX6A™ Category 6A UTP Field Term RJ45 Plug



### NetKey® Faceplates and Adapters



### Patch Panels, Kits, and Accessories



CPPA48HDWBL



QAPP48HDBL

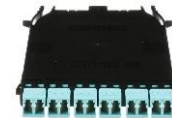


SRBBRKT

### HD Flex™ Fiber Cabling System



FLEX1UPN06



FHCXO-12-10AS

### Industrial Adapters and Patch Panels



CDPP8RG



FDME8RG

### Fiber Patch Cords and Pigtails



F92ERLNLNSNM\*\*\*

FX2ERLNLNSNM\*\*\*

F91BN1NNSNM001

### Fiber Optic Cable



FODPX24Y

FOCRX12Y

FOKPX12

### Cabinets and Thermal Management



SPDUBRK



D-Type Cabinets



D12FBB  
D15FBB



S-Type Cabinets

## Cable Ties food industry, detectable

The Metal Content Tie is a cable tie specifically designed for use in the food and pharmaceutical processing industries. A unique manufacturing process, involving the inclusion of a metallic pigment, enables even small 'cut-off' sections of the tie to be detected by standard metal-detecting equipment. Ideally suited for the installation of cabling in and around the manufacturing process.



### Features & Benefits

- Total metal dispersion throughout the tie
- Available in a wide range of sizes
- Usable as part of HACCP process\*
- Unique blue colour for easy visual detection
- Greatly reduces risk of contamination
- Magnetic and X-Ray detectable

## Cable Ties for temperatures up to + 105°C (heat stabilised)

These cable ties are used for routing, bundling and securing of cables, pipes and hoses.

### Features & Benefits

- Available in a wide range of materials and sizes
- High tensile strength with very low insertion force
- Only high quality plastic is used meeting recycling targets
- Inside serrated cable ties for a strong hold onto bundles
- Ergonomic bent tail offers quick and simple installation
- Easy application either manually or with an application tool

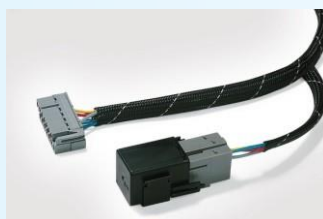


## Polyester braided sleeving, UL94V0 classification

HEGPV0 braided sleeveings are used wherever fire protection is important such as control cabinets, robotics and automatic equipment. Also HEGPV0 is suitable for railway vehicle manufacturing as it conforms to the strict requirements of DIN5510-2 and NFF-16 101.

### Features & Benefits

- Made of sturdy polyester
- Self-extinguishing according to UL94 V0 for enhanced fire protection
- Highly flexible
- High abrasion resistance
- High surface coverage



## Manual Tensioning Tool with Plastic Housing EVO7 up to 4.8mm strap width

### Features and Benefits

- Ergonomic, slip-proof handle for a comfortable and secure grip
- Extremely low maintenance
- Fast and precise application with minimum effort (TLC mechanism)
- Convenient and simple tension adjustment
- Extended, slim nose for use in narrow spaces
- Housing made of resilient and lightweight glass fibre-reinforced polyester
- Standard grip span (90 mm) and short grip span (80 mm) available



## PK/POK - COMBINATION CABLE MARKER



### PK / POK

- Easy mounted onto PKH/POH carriers to fit any size of cable, tube or pipe.
- Yellow or white with black print as standard. 0-9 in international colour code. Special colours and prints on request.
- PK is available in Halogen free material (ZEREX).

### PKH / POH

- PKH/POH holders for cable markers
- PKH also available in Halogen free material (polyamide 6.6)

## PP+/PPA+ PROFILE



### PP+

- Flat hard marker tag profile for PT+, PTC, PTM and PM etc.
- Developed for easy printing on site.

### PPA+

- Self-adhesive flat PP-profile for component marking in cabinets etc.

## PHZ - HEAT SHRINK TUBING FOR PRINTING



- Flexible halogen free heat shrink tubing for marking on site.
- 2:1 shrink ratio.
- Shrink temperature > 90°C.
- Working temperature - 30°C to +150°C
- Standard colour yellow and white.
- Other colours on request.

## PA-CLOSED WIRE MARKERS - CHEVRON CUT



### INFORMATION

- Closed permanent grip adjustable marker sleeves.
- For applications including electrical engineering, pneumatics and hydraulics.
- Twist protection for secure combination marketing.
- Excellent legibility.



## HF - PRINTABLE HEAT SHRINK SLEEVES (HALOGEN FREE)



### INFORMATION

Very Flexible, low smoke, zero halogen and flame retardant heat shrinkable tubing (2.1 shrink ratio) Flexible polyolefin sleeves used for wire identification. Others excellent fine safety characteristics combined with minimal smoke emissions.

- Flame Retardant to UL224 VW-1
- Low Smoke
- Zero Halogen
- Easy Pick Application
- Backing card perforated after every sleeve
- Print performance to Military Specifications
- RoHS and REACH Compliant

# APP

Anderson Power Products®

An IDEAL Company

# CONNECTORS

## High Quality Power Solutions



2002G4 | SAF-D-GRID® 400  
RECEPTACLE HOUSING

- 10 Amps up to 700 Amps • Environmentally Sealed • Hot Plug
- Wire, PCB & Bus Bar • Auxiliary Contacts • Touch Safe
- Power, Signal & Ground • Blindmate • Latching

INFORMATION  
TECHNOLOGY



Powerpole®



PowerMod®



Saf-D-Grid®



INDUSTRIAL



Power Drawer®



Power Drawer®



PowerMod®



Power Clip®

MATERIAL  
HANDLING



SB®

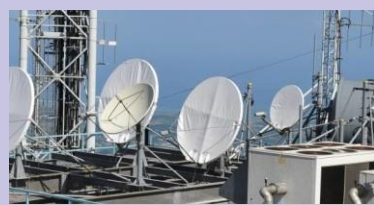


Euro Battery Connectors

SBE® / SBX®  
SBO®



TELECOM



Powerpole®



SB®



PowerMod®



Power Drawer®

ALTERNATE  
ENERGY



Powerpole®



SPEC Pak®



RoHS Compliant • [www.andersonpower.com](http://www.andersonpower.com)

Jainsons  
INTELLIGENT GLOBAL SOLUTIONS

## Wire-Nut® Wire Connectors



Fixed square spring for a secure hold  
 Refined range to handle all common applications  
 Positive grip shell that is perfect to twist-on with fingers  
 Excellent for fine stranded wire applications

**CLASSIC**  
 from the IDEAL family of  
 Performance & Reliability

## Stripmaster® Wire Strippers

- One-step stripping enhances productivity
- Spring-action motion increases leverage and reduces operator fatigue
- Precision-ground, knife-type blades provide clean, accurate stripping

Description	Cat. No.
Stripmaster® Wire Stripper, 10-22 AWG (Boxed)	<b>45-092</b>
Stripmaster® Wire Stripper, 10-22 AWG (Clamshell)	<b>45-292</b>
Stripmaster® Wire Stripper, Coax RG-6	<b>45-262</b>

See Section C for complete Stripmaster® Wire Stripper line.



## Stripmaster® Wire Strippers



**45-120**

ground, knife-type blades for rate, easy stripping without nicking insulation in wire cutter and looping holes  
 enient plier nose for extra gripping strength  
 etched wire gauge for easy-to-read visibility  
 loaded automatic opening  
 resistant, blace oxide finish  
 steel construction.

## Relax™ Super T®- Stripmaster Wire Strippers



- 6/32 and 8/32 self-chasing screw-cutting holes
- Locking pawl for safe storage
- Ergonomic design for maximum comfort
- Curved handles reduce wrist fatigue
- Sleeves extend to stripping head to cushion thumb and fingers
- Textured sleeves with extra cushioning for added comfort.



## AC PRODUCTS



Molded Case Circuit Breakers



Surge Protective Device



Vacuum Circuit Breakers



Miniature Circuit Breakers



Contactors & Overload Relays



Air Circuit Breakers

## EV Relay

### Features

#### Compact Design

Achieved compact size by filling with hydrogen and nitrogen gas to improve the breaking performance.

#### Proven Safety

High value of short circuit current withstanding.

#### Superior Reliability

Excellent performance with electrical and mechanical endurances.



## High Voltage DC Relay

### What is LSIS High Voltage DC Relay?

The LSIS High Voltage DC Relay serves to supply and disconnect DC power, and contains hydrogen and nitrogen gas, which is optimized to withstand making and breaking. Therefore, it has excellent electrical durability, compact size, and low noise.



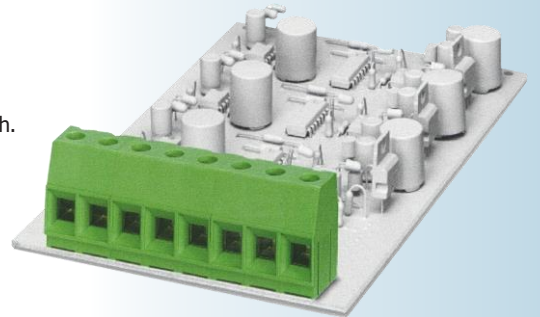
## DIRECTLY PCB MOUNDED CONNECTOR



The COMBICON control product range comprises PCB terminal blocks (PCB connection terminal blocks) and connectors for MCR technology.

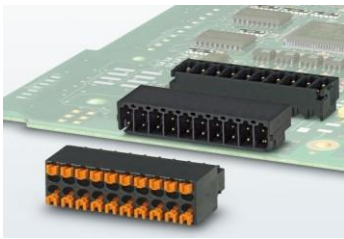
Their versatile design makes them ideal for a wide range of applications in industrial electronics. The product range offers various features and conductor connection options with 2.5/2.54 mm to 7.62 mm pitch.

The PCB terminal blocks are designed for current up to 41 A and voltages up to 630 V. The connectors feature a rated voltage of up to 630 V and a current carrying capacity of up to 12 A.



### Inverted PCB connector with lateral self-locking flange

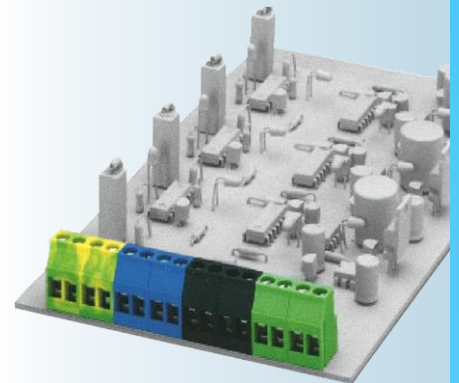
Both wire-to-wire and wire-to-board connections can be implemented with the inverted PCB connectors in the IFMC 1,5 series. The lateral self-locking flanges ensure secure latching and prevent unintentional release.



### Double-row PCB connector with push-in connection

The flat push-in connector in the DFMC 0,5 series enables the double-level connection of conductors with a design height of just 10.5 mm.

The gold-plated contact system offers maximum transmission reliability even for the lowest currents and voltages.



## ELECTRIC COMPONENTS

### HSK-K

Cable gland made of polyamide



### HSK-K-MULTI

Multi cable gland made of polyamide



### Circular connectors

HUMMEL circular connectors are used in many industrial applications. The product range covers sizes M8 to M40. Whether power or signal connectors, Industrial Ethernet or customer-specific special applications - HUMMEL offers the right solution for every requirement. Quick-release fastener variants, angle, coupling and appliance plugs for the most varied installation situations round off the respective product families; they are also available as INOX versions.



### Conduit Systems

Corrugated Conduit Systems, Conduit Cable Cable Glands, Angled Systems, Combined Cable Glands, Accessories



[www.hummel.com](http://www.hummel.com)

## Battery Operated Crimping Tools

### Gave Tool – Prensaterminales Electro Hdca. 300/240 mm<sup>2</sup>

- Suitable for = cable shoes and connector
- Press shape = Universal (change inserts)
- Cross Section = 6.. 300 mm<sup>2</sup>
- With ratchet to mechanical tools) = No
- Execution/activity = Electric hydraulically



### EK 120/42 Battery powered hydraulic crimping tool 16-400 mm<sup>2</sup>

- C-head with very wide crimping range to 400 mm<sup>2</sup>
- Up to 60 % less crimping operations due to wide crimping compared with 6 t tools
- Easy handling by optimum weight distribution



### EK 50 ML Electromechanical crimping tool 0.14 - 50 mm<sup>2</sup>

- Simple and safe: One-button operating concept for controlling all tool functions
- Electronic control with locking function monitors full closing of the dies
- Simple and safe: Automatic retraction when operation is complete
- Manual retract as required
- Motor stall protection
- Ergonomic 2C housing in the Klauke "In-line Design"
- Tool fixing point for use with balancer aid or lanyard
- Very low weight and high speed for maximum efficiency
- Powerful drive technology for effortless operations
- Powerful 10.8 V Li-Ion battery with charge status display



### Square crimping Very lightweight and ergonomic

- One crimping profile for all cross-sections due to automatic cross-section adjustment
- With ratchet for consistently-controlled crimp results
- Lateral insertion (side crimping)
- Handle with slip guard and inscription panel
- Safety pad in handle for slip-free working



### K 48 Crimping tool for cable end-sleeves 0.14 - 2.5 mm<sup>2</sup>

- One crimp profile per cross-section
- Lateral insertion (side crimping)
- Simple and safe: Exact cross-section assignment thanks to permanent marking on the crimping tool
- Optimum handling due to ergonomically-shaped handle



### K 507 Crimping tool with interchangeable dies

- With ratchet for consistently-controlled crimp results
- Adjusting disc to compensate for the natural tool wear



## Battery Operated Crimping Tools

### Insulated Cable end-Sleeves 0.5-50 mm<sup>2</sup>

- Colour-coding and tube dimension to DIN 46228, part 4
- Heat resistant to 105° C
- Material  
Copper (EN13600)
- Synthetic material: polypropylene
- Surface  
Tin-plated to protect against corrosion
- Additional information
- \* = not standardised
- \*\*\* = quantities in one bag



### Insulated solderless terminals 0.5-6mm<sup>2</sup>



# SHELL STYLES



**MS 3101E / 3101F**



**CABLE CONNECTOR WITH INTEGRAL CABLE CLAMP**

MS 3101E or MS 3101F cable connectors are used for cable extension requirements, where mounting provisions are unnecessary. MS 3101E or MS 3101F connectors mate with 3106 and 3108 styles. For new equipment customers should specify MS 3101.



**MS 3102E / MS 3102R**



**BOX MOUNTING RECEPTACLE**

MS 3102F and MS 3102R box mounting receptacles are used in junction boxes or as an integral part of equipment. These connectors are identical in construction and mate with 3106 and 3108 styles. For new equipment customers should specify MS 3102R.



**MS 3106E / MS 3106F**



**STRAIGHT CABLE CONNECTOR WITH INTEGRAL CABLE CLAMP**

MS 3106E and MS 3106F straight cable connectors mate with 3100, 3101 and 3102 styles. MS 3106F is identical to MS 3106E except for 'O' ring under the coupling nut, thus effecting a seal. For new equipment customers should specify MS 3106F.



**MS 3108E / MS 3108F**



**90° ANGLE CONNECTOR**

MS 3108E 90° cable connectors (without "O" ring seal with cable clamp) are used where there is limited space and where wires must be brought at abrupt angles. This connector mate with 3100, 3101 and 3102 styles. MS 3108F is identical to MS 3108E except for "O" ring under coupling nut.

**NYLON-FULLY INSULATED  
MALE DISCONNECTS  
FUNNEL ENTRY**



**NYLON-FULLY  
INSULATED  
DOUBLE CRIMP  
MALE DISCONNECTS  
FUNNEL ENTRY**



**NYLON-INSULATED  
DOUBLE CRIMP  
FUNNEL ENTRY**



**NYLON-INSULATED  
BUTT SPLICE  
CONNECTORS**



**NYLON-INSULATED  
DOUBLE CRIMP  
FEMALE  
DISCONNECTS**



**VINYL-INSULATED  
RING TERMINALS  
DIN46237**



**PANDUIT**<sup>®</sup>  
**STRONGHOLD**<sup>™</sup>

Hellermann**Tyton**

**X**  
**PARTEX**  
MARKING SYSTEMS

**APP**  
Anderson Power Products<sup>®</sup>  
An **IDEAL** Company

**IDEAL**<sup>®</sup>

**Klauke**<sup>®</sup>  
A Textron Company

**PHOENIX**  
**CONTACT**

  
ALLIED CONNECTORS

**LS**  
**ELECTRIC**

**HUMMEL**

  
FUJI TERMINAL  
富士端子

  
**WOER** **WOER Heat-Shrinkable**  
**Material**

  
**tycab**  
Cable ties

Authorised Distributor :

**Jainsons** INDIA PVT. LTD.

Head Office : C-5, Community Center, Naraina  
Vihar, New Delhi-110028 (India)  
M : 8447012326, 9873664653  
E-mail : sales@jainsonsindia.net  
Website : www.jainsonsindia.net

